

SMART FIXTURES  
SMART MANUFACTURING



Mazak



# SmartFix4.0

The next Revolution in Industrial AI



Precision meets performance

## SmartFix4.0

Akhil Rabindra

Team Member - RV Forms & Gears and Race Car Driver - Aston Martin Racing Driver Academy racing in the Aston Martin GT4 Vantage at the GT4 European Series 2019 and 24H Series European (GT) 2019.

**RV Forms & Gears LLP**

MF 11, SIDCO Industrial Estate, Guindy, Chennai - 600 032, Tamilnadu, India  
Call 77570 53326 or email us on [marketing@rvformsandgears.com](mailto:marketing@rvformsandgears.com) for enquiries  
[www.rvformsandgears.com](http://www.rvformsandgears.com)

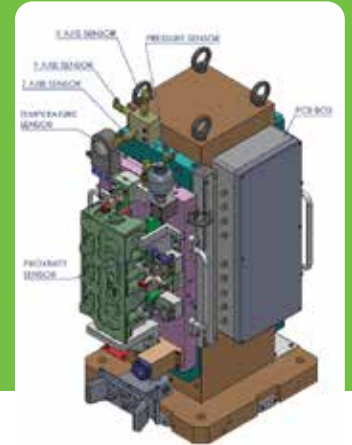


**FEATURES**

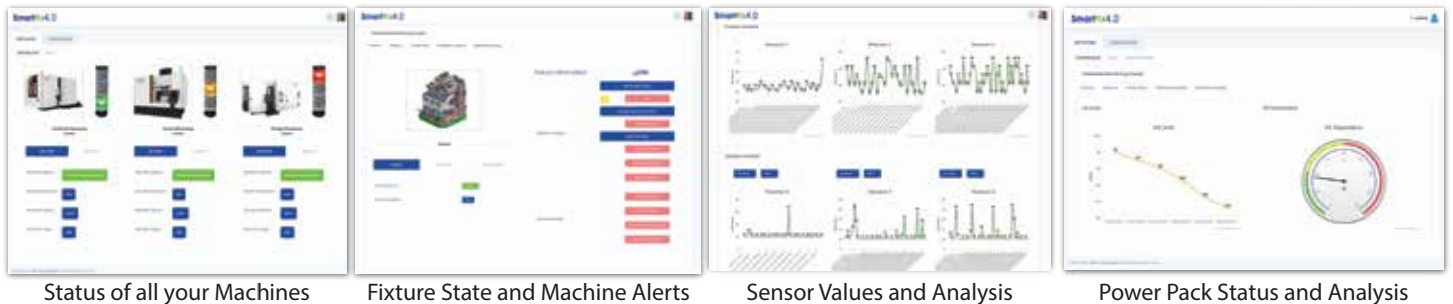
- Cloud-based application
- Fixture level AI
- Graphical data visualizations
- Multiple sensor data visualization
- Threshold breach indicators

**ADVANTAGES**

- Cost effective
- Increased Safety
- Predictive Maintenance
- Tool level AI



**SNAPSHOT**



**ANALYTICS FOR SMARTFIX 4.0**

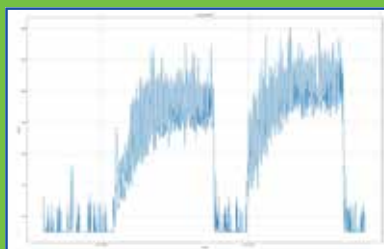
- **Industry Pioneer** in **Fixture Level AI**. • Analytics is **tailor made** case-by-case to solve unique problems and work in all kinds of situations. • **Leverage Machine Learning and Artificial Intelligence (ML/AI)** to provide a wide range of benefits. • Machine Learning models **constantly improve** with more data to generate best outcome.

**TOOL WEAR ANALYTICS**

- Each and every machining operation comes with a unique vibration pattern. These patterns can be analyzed using AI & ML to predict tool wear in advance for each tool. • Cost saving in tool consumption.



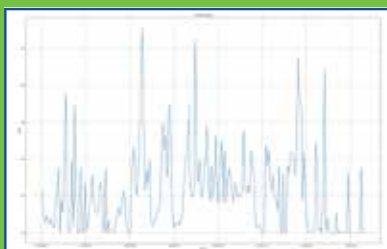
Pocket Milling Operation



Circular Milling Operation



Drilling Operation



Face Milling Operation



Boring Operation



Reaming Operation